



WHY TO COOPERATE WITH JUSTA?

ABOUT US

Justa company was founded in 1992 in Poland. For over 23 years Justa has strengthened position in the market putting emphasis on quality and service. Now the company operates on many markets of Europe and also in Australia and Canada.

If you are looking for high quality windows & doors designed and manufactured to add beauty, elegance and distinction to your home, look no further. We've been helping people transform the look and feel of their homes - from regular houses into „Dream Homes“

We deliver high quality products which meets customers' expectations. To provide best quality we cooperate with Aliplast - european leading aluminium profiles manufacturer.

Our products have technical approvals and certificates confirming its high quality.

The Company's offer includes window/door systems. The windows/doors systems offered are available in two versions: with thermal insulation: Imperial, Triline, Superial, Star and without thermal insulation: Econoline. Included in our offer are also sliding doors: Visoglide, Superglide, Slide Plus with thermal insulation and without: Visoglide Light, Slide Cold, folding door system Panorama.



ALUMINIUM WINDOWS AND DOORS SYSTEMS

IMPERIAL, IPi, IPi+

Window and door system with thermal break:

- three chamber system
- sealings: with extruded EPDM rubbers
- built-in depth: outer frame 65 mm, sash 74 mm
- glazing - window: from 4 to 51 mm
- various forms of hardware and finishing available.

Applications:

- flush, single or double sash doors, open in, swing doors (double action)
- various types of windows



ALUMINIUM WINDOWS AND DOORS SYSTEMS

IMPERIAL HIDDEN FRAME

IP-SU Imperial Hidden Frame is the part of Imperial window and door system. The windows produced from the elements of this system have casements that are unseen from the external side of the building. The specially designed shape of the frame covers the entire height of the frame profile.

System IP-US gives ability to hidden windows in aluminium construction. Thanks to this solution we can also avoid vertical and horizontal divisions.



STAR

- A new highly insulating for aluminium window and door system. U values, one of the best in the market = **Uf from 0,6 W/m²K**
- frame width: 90 mm (sash 99 mm)
 - glazing height: 25 mm
 - glazing bar flush with frame and sash
 - central gasket coextruded
 - hardware mounted in aluminium, no screws in thermal breaks
 - glazing thickness: from 17 mm to 82 mm
 - glassisolation the same in window and door profiles
 - possibility of glazing on the outside
 - cylindrical hinge (door): modern, elegant and esthetic solution, invisible adjustment in 3 direction (available in all RAL colour, anodised)
 - modern design



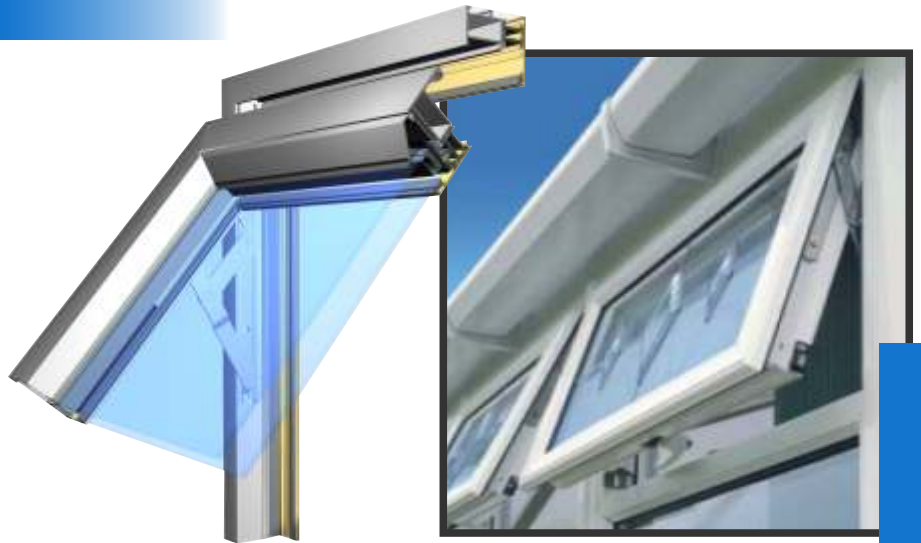
ALUMINIUM WINDOWS AND DOORS SYSTEMS

INTRUDER

This series of high quality profiles with thermal break is applicable for acoustic and thermal insulation. The profiles for these series are composed by 2 hollow extrusions separated from another by polyamide strips PA 6.6.25 reinforced with glass fibre.

Applications:

- various types of windows

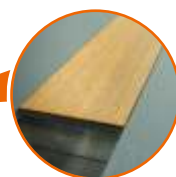
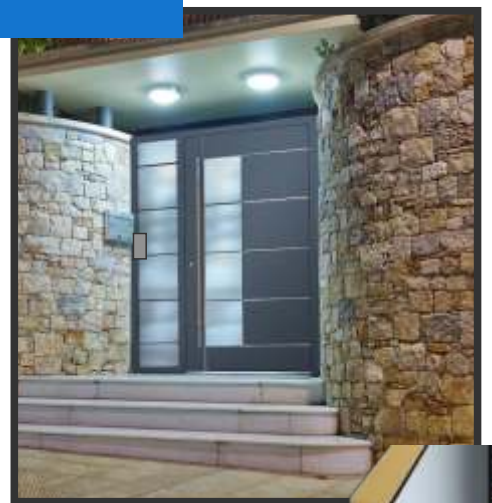


PANEL DOORS

The panel doors are addressed to the most demanding users. It is a perfect solution for those who treat their homes as something more than a simple habitation.

The support structure is the STAR system, which provides excellent thermal insulation. This actually affects the indoor comfort and the operating costs of buildings.

- a single plane of the opening frame and of the panel glued to the leaf (the panel is attached to the outdoor side or both sides of the leaf)
- two types of hinges available: the roller hinge, a solution dedicated to the Star system, or the covered hinge (Dr. Hahn)
- standard or bolt three-point locks for customer's choice
- indoor handles and grips available from the standard offer of Justa
- filling panels available in a variety of designs and colours
- frame/leaf depth: 90 mm
- variety of designs and colours
- frame/leaf depth: 90 mm



FOLDING DOOR SYSTEM

PANORAMA

A three-chamber folding door system with thermal insulation that enables arrangement of wide open passageways. The visual thickness of profiles in use has been reduced to give the design a light look.

- Width: frame: 35.8 mm to 57 mm; leaf: 73 mm
- Installation depth: frame: 75 mm, leaf: 75 mm
- sill height: 22 mm
- available filling thickness range: 4 to 51 mm
- sill height: 22 mm
- max leaf weight: 100 kg, both opened to the outside and to the inside
- 2, 3, 4, 6, or 8-sectional designs, both for opened to the outside and to the inside
- modern design

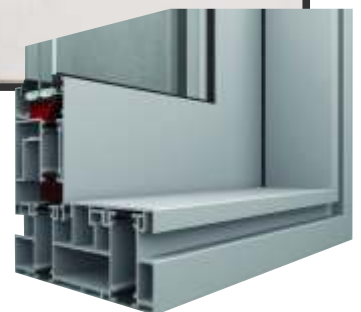


SYSTEM FOR SLIDING DOORS

ULTRAGLIDE

System about the increased thermal insulation:

- depth of profiles: frame - 153 mm, sash - 67 mm
- width of profiles: frame - 64 mm, sash - 100 mm
- glazing thickness is between 6-53 mm
- sash: 3 chambers, frame: 3 chambers or 5 chambers which meaningful improve the Uf value
- max. sash weight: 250 kG (sliding system), 400 kG (lift and slide system)
- large Polyamide thermal break provides superior thermal performance
- profiles are designed with a robust but contemporary styling with attractive square edge sections



SYSTEM FOR SLIDING DOORS

VISOGLIDE, VISOGLIDE HS

System for lift and sliding patio doors with thermal break.

Applications:

- to separate terrace and living quarters in houses and flats
- separations for conservatories looking out into the garden and to create space in a passage way

Visoglide HS is a variant of the VISOGLIDE-series where you can find the usual sliding doors. System for lift and sliding patio doors with thermal break.

Applications

- to separate terrace and living quarters in houses and flats
- separations for conservatories looking out into the garden and to create space in a passage way.



SLIDECOLD Without thermal break

System for sliding windows without thermal break.

- built-in depth: outer frame 51 mm
- glazing: from 6-9mm and from 20 to 24 mm
- several variations possible: 2-, 3-, 4- and 6-parted

Applications:

- for replacement of opening windows, where the rotating frame forms are a hindrance
- for dividing constructions as verandas, and for creating space from a large passage
- for dividing a terrace and a accommodation in houses and apartments



ALUMINIUM WINDOWS AND DOORS SYSTEMS

ECONOLINE Without thermal break

Window and door system without thermal isolation

- built-in depth: outer frame 51 mm, sash 60 mm
- glazing: from 3 up to 38 mm
- glazing rebate: 22 mm
- sealings: Centre seal and inside stop rubber in EPDM
- possible to bend the profiles
- rounded glass beads are available for a soft-look.

Applications:

- windows and patio doors for indoor use and applications where no thermal break is required
- single and double opening flat doors and touch doors
- sliding windows
- innerwalls



SYSTEM FOR HANDRAILS

THEATRON GLASS

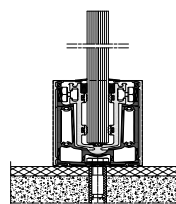
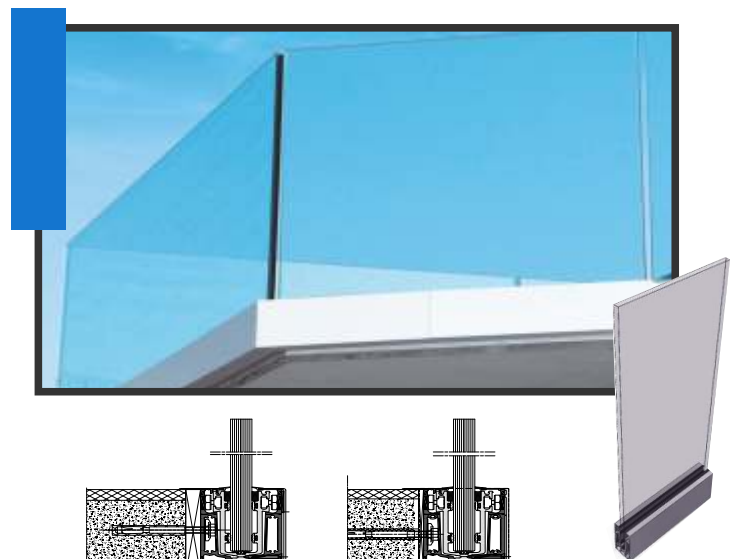
The system can be applied to various architectural contexts (for indoor and outdoor applications) including balconies, rails, terraces, corridors, staircases, etc.

In all cases, we can guarantee its durability, resistance and inalterability when exposed to atmospheric agents.

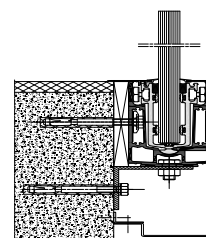
- Glass unit 3000 mm maximum
- Glass composition for overload Hk 100 and Hk 200
- Possibility of anchoring to floors and stairs thanks to the use of fixing brackets above or frontal to the floor

Applications:

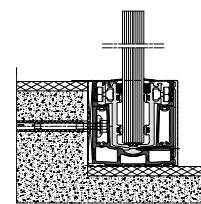
- Balconies
- Terraces
- Applications on floors or ramps both in external and internal settings, for public or private use.



Solution with floor fixing



Solution with wall fixing



Solution with floor/wall fixing

WINDOWS DOORS FASADES

ALU & UPVC

JUSTA

Kobielnik 86,
32-412 Wisniowa
fax.+48 12 271 70 02
tel.+48 12 271 70 03
+48 12 271 71 78
+48 12 271 42 44
e-mail: biuro@justa.pl

aliplast
aluminium systems


METRA


Dr. Hahn
HINGES. MADE IN GERMANY.

Sobinco
OPENE YOUR LIFE



**WINK
HAUS**

Press-Glas

